

Notes on Maxwell & Delaney

PSYCH 710

October 14, 2021

4 Chapter 4 - Individual Comparisons of Means

4.1 Omnibus vs. Focused Tests

For the one-way ANOVAs that we have been discussing so far, a significant F test means that we reject the null hypothesis $H_0: \alpha_1 = \alpha_2 = \dots = \alpha_a = 0$ in favor of the alternative hypothesis $H_1: \alpha_j \neq 0$ (for at least one group, j). So, when $a \geq 3$, a significant omnibus F test does not tell us precisely how the group means differ from each other. To address this question, and make our inferences more precise, we need to use more focused comparisons of the group means.

There is another reason for using focused comparisons. In a sense, the omnibus F test examines all possible patterns of differences among the group means. The advantage of this test is obvious: we don't need to specify the pattern of effects in advance. However, there is a penalty to this general approach, namely reduced power. As we shall see, asking a focused question can result in a statistical test with much greater power than the omnibus F test.

The following example shows that a focused comparison among means can be significant even when the omnibus F test is not significant.

```
set.seed(seed = 934)
y <- c(rnorm(n = 60, mean = 100, sd = 20), rnorm(n = 10, 110, sd = 20))
g <- factor(rep(seq(1, 7, 1), each = 10), labels = "g", ordered = FALSE)
```

If you examine the line `y <- c(rnorm(n=60,...,sd=20))`; carefully, you will see that it consists of 60 random numbers drawn from a gaussian distribution with a mean of 100, and 10 random numbers drawn from a gaussian distribution with a mean of 110. Our grouping variable, `g`, will be used to group the `y`'s into 7 sets of 10 numbers each. Boxplots of the data are shown in Figure 1.

```
boxplot(y~g)
```

Now we conduct a standard ANOVA.

```
lm01 <- lm(y~g);
anova(lm01);
```

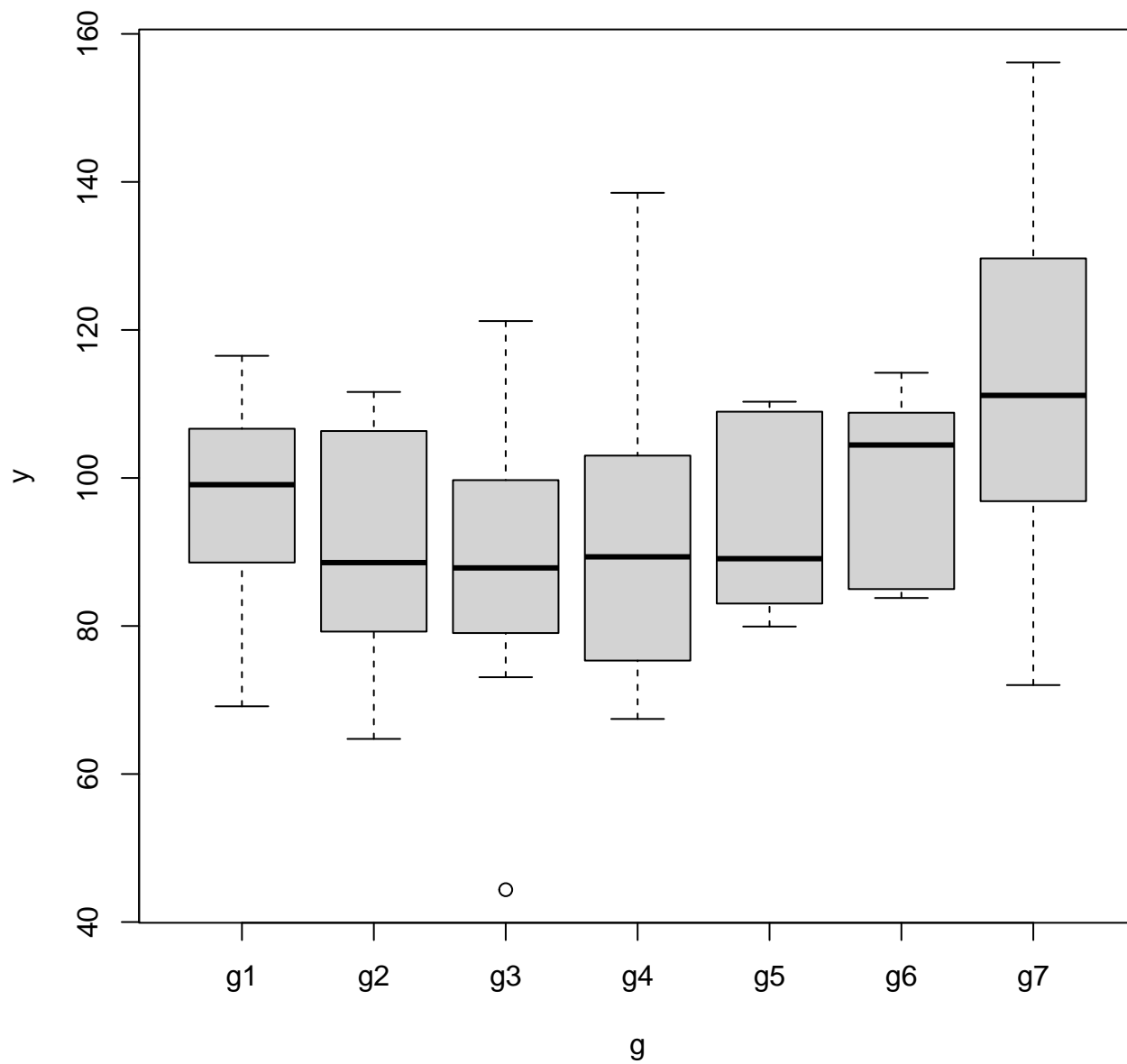


Figure 1: Boxplots of y data for different groups, g.

```
## Analysis of Variance Table
##
## Response: y
##           Df Sum Sq Mean Sq F value Pr(>F)
## g           6   3431   571.8   1.726   0.13
## Residuals  63  20873   331.3
```

Notice that the omnibus F test fails to find a significant difference among the groups. Next, we compare group 7 to the other groups. Specifically, we ask whether the mean of group 7 differs from the mean of the 6 other groups. To do this analysis, I first need to download some R commands:

```
source(url("http://pnb.mcmaster.ca/bennett/psy710/Rscripts/linear_contrast_v2.R"))

## [1] "loading function linear.comparison"
```

The `source` command loaded several commands that can be used to perform a linear comparison among means in a one-way design. Next, I have to specify my *contrast weights*:

```
my.weights <- c(-1, -1, -1, -1, -1, -1, 6)
```

We will discuss the meaning of the contrast weights in the following section. Finally, I use the `linear.comparison` command, which was loaded into R's workspace by the previous `source` command, to perform the linear comparison:

```
my.contrast <- linear.comparison(y, g, c.weights = my.weights)

## [1] "computing linear comparisons assuming equal variances among groups"
## [1] "C 1: F=7.218, t=2.687, p=0.009, psi=100.218, CI=(-2.897,203.332), adj.CI=
      (25.673,174.762)"

my.contrast[[1]]$F

## [1] 7.21771

my.contrast[[1]]$p.2tailed

## [1] 0.00921941
```

The F test for this *linear contrast*, or *linear comparison*, is significant, even though the omnibus F test was not.

4.1.1 using standard R commands

In this section I will show you how to perform the linear comparison with R's built-in commands (i.e., without using the `linear.comparison` command). The first step is to inform R that I want to perform a particular comparison among the various groups represented by the factor `g`:

```
contrasts(g) <- my.weights
```

Next, I perform an ANOVA:

```
my.aov <- aov(y~g)
```

Finally, I display the ANOVA table in a way that splits the group effect into various pieces:

```
summary(my.aov, split=list(g=list(myContrast=1,others=2:6)))
```

The `split` syntax is complicated because it is a list of lists: It is used to inform R to split a `list` of terms in the linear model (e.g., `g`) into lists of pieces. In this case, we're telling R to split the effects related to factor `g` into two pieces: the first piece corresponds to our linear contrast, and the second piece is a combination of five `other` things that are not of interest. We will discuss what these pieces mean in the following sections. For now, let's examine the output of the `summary` command:

```
##           Df Sum Sq Mean Sq F value Pr(>F)
## g           6   3431     572    1.73 0.1296
##   g: myContrast 1   2391     2391    7.22 0.0092 **
##   g: others     5   1039     208    0.63 0.6794
## Residuals    63  20873     331
## ---
## Signif. codes:
## 0 '***' 0.001 '**' 0.01 '*' 0.05 '.' 0.1 ' ' 1
```

Notice that the F and p values listed in the ANOVA table are the same (to within rounding error) as those provided by `linear.comparison`.

4.2 Complex Comparisons

The previous examples used a linear contrast to test the null hypothesis:

$$-1(\mu_1 + \mu_2 + \mu_3 + \mu_4 + \mu_5 + \mu_6) + 6\mu_7 = 0$$

which is equivalent to the null hypotheses

$$6\mu_7 - 1(\mu_1 + \mu_2 + \mu_3 + \mu_4 + \mu_5 + \mu_6) = 0$$

and, by multiplying both sides of the equation by $\frac{1}{6}$,

$$\mu_7 - \frac{1}{6}(\mu_1 + \mu_2 + \mu_3 + \mu_4 + \mu_5 + \mu_6) = 0$$

which is equivalent (finally), to

$$\mu_7 = \frac{1}{6}(\mu_1 + \mu_2 + \mu_3 + \mu_4 + \mu_5 + \mu_6) \tag{1}$$

This last form of the hypothesis is perhaps the easiest to interpret: the null hypothesis is that the mean of group 7 does not differ from the mean of the other group means. We rejected that null hypothesis to accept the alternative

$$\mu_7 \neq \frac{1}{6}(\mu_1 + \mu_2 + \mu_3 + \mu_4 + \mu_5 + \mu_6)$$

The general form of a linear contrast is

$$H_0 : c_1\mu_1 + c_2\mu_2 + \dots + c_a\mu_a = \Psi = 0 \quad (2)$$

where the weights of the linear contrast are constrained to sum to zero

$$\sum_{j=1}^a c_j = 0 \quad (3)$$

and the estimation of the comparison, $\hat{\Psi}$, is

$$\hat{\Psi} = \sum_{j=1}^a (c_j \bar{Y}_j) \quad (4)$$

In the example from the preceding section, $\hat{\Psi} = 100.2$.

```
my.contrast[[1]]$psi
```

```
## [1] 100.218
```

If there were four groups, and we wanted to compare group 3 to the mean of groups 1 and 2, then we would use the following contrast

$$\Psi = (1)\mu_1 + (1)\mu_2 - 2\mu_3 + (0)\mu_4$$

and our coefficients would be $c=(1, 1, -2, 0)$. If we wanted to compare group 1 to group 4, the coefficients would be $c=(1, 0, 0, -1)$. If we wanted to compare groups 1 and 2 to groups 3 and 4, the coefficients would be $c=(1, 1, -1, -1)$.

A linear contrast is evaluated using our standard F test, which in this case is equal to

$$F = \frac{(\Psi^2) / \sum_{j=1}^a (c_j^2 / n_j)}{MS_W} \quad (5)$$

when n is equal across groups, Equation 5 simplifies to

$$F = \frac{(n\Psi^2) / \sum_{j=1}^a (c_j^2)}{MS_W} \quad (6)$$

The numerators in Equations 5 and 6 are $SS_{contrast}$. There is only 1 degree of freedom for each contrast, so $SS_{contrast} = MS_{contrast}$. The degrees of freedom for the denominator is $N - a$, where a is the number of groups or, equivalently, the number of parameters in the full model (i.e., an intercept and $a - 1$ α 's). Most of these values are contained in the variable returned by `linear.comparison`:

```

my.contrast[[1]]$F

## [1] 7.21771

my.contrast[[1]]$SS.contrast

## [1] 2391.33

my.contrast[[1]]$df1

## [1] 1

my.contrast[[1]]$df2

## [1] 63

```

We can use these quantities to calculate $MS_W = F/SS_{contrast} = 331.3$. The p-value was 0.00922, which is less than $\alpha = .05$, so we reject the *two-tailed* null hypothesis described by Equation 1.

Examination of Equation 5 shows that Ψ is divided by a weighted sum of contrast weights. This division means that the values of $SS_{contrast}$, F , and p are not altered by multiplying the contrast weights by a constant. In other words, contrast weights of (for example) $c=(1, 1, 1, -3)$, $c=(2, 2, 2, -6)$, and $c=(1/3, 1/3, 1/3, -1)$ will all give the same values of $SS_{contrast}$, F , and p (although the value of Ψ will differ; see Equation 4).

4.2.1 one-tailed tests

How can we evaluate the following hypotheses?

$$H0 : \quad \mu_7 \leq \frac{1}{6}(\mu_1 + \mu_2 + \mu_3 + \mu_4 + \mu_5 + \mu_6) \quad (7)$$

$$H1 : \quad \mu_7 > \frac{1}{6}(\mu_1 + \mu_2 + \mu_3 + \mu_4 + \mu_5 + \mu_6) \quad (8)$$

A one-tailed test is appropriate here. One-tailed tests can be done easily with t tests, and therefore it would be useful to convert our F statistic (Equation 5) into a t statistic. In fact, it can be shown that

$$t = \frac{\Psi / \sqrt{\sum_{j=1}^a (c_j^2 / n_j)}}{\sqrt{MS_W}} \quad (9)$$

follows a t distribution with $N - a$ degrees of freedom. A comparison of Equations 5 and 9 will show that $F = t^2$, and therefore $t = \pm\sqrt{F}$. In other words, it is possible to recover the magnitude of t simply by taking the square-root of F . The sign of t can be recovered by noting the sign of $\hat{\Psi}$: if $\hat{\Psi} < 0$, then $t = -\sqrt{F}$, but if $\hat{\Psi} > 0$ then $t = \sqrt{F}$. In our example, $\hat{\Psi} = 100.2$, and therefore $t = \sqrt{7.2177} = 2.68$.

Finally, we can evaluate the null hypothesis. Our null hypothesis predicts that $\Psi \leq 0$. Therefore, when the null hypothesis is true, the largest possible value of Ψ in the population is zero, and observed values of Ψ (i.e., $\hat{\Psi}$) that are greater than zero are due only to sampling variation. This is a long-winded way of saying that large, positive values of $\hat{\Psi}$ are unlikely if the null hypothesis is

true. These statements about $\hat{\Psi}$ can be extended to t (Eq. 9): large, positive values of t are unlikely if the null hypothesis is true. We can calculate the probability of obtaining a value of t that is equal to or greater than our observed value of $t = 2.68$ given the assumption that $\Psi = 0$:

```
pt(2.68,df=63,lower.tail=FALSE)
```

```
## [1] 0.00469164
```

Note that the degrees of freedom (`df`) correspond to the value in the denominator in Equation 5 and so were set to $N - a = 63$. Setting `lower.tail` to `FALSE` tells R that we want to know the probability of getting a t value that is *larger* than 2.68; setting `lower.tail` to `TRUE` (the default value) would return the probability of getting a value that is less than 2.68. The probability $p = 0.0046$ represents the probability of getting our result, or something more extreme, if the hypothesis that $\Psi = 0$ was true. Suppose, instead, we had assumed that Ψ was some value less than zero? In that case, the probability of getting a value of t that was equal to or greater than our observed value would be even lower. Therefore, the value $p = 0.0046$ represents the *highest* probability of obtaining our result (or something more extreme) given that the null hypothesis $\Psi \leq 0$ is true. Adopting a standard Type I error rate (i.e., $\alpha = .01$ or $.05$) would lead us to reject the null hypothesis in favour of the alternative, $\Psi > 0$.

4.3 Unequal Variances

The denominator in Equation 5 is MS_W , which is an estimate of σ_e^2 that is derived from *all* of the groups, not just the ones being compared. When the variance is homogeneous across groups, MS_W is a better estimator of σ_e^2 than an estimate obtained from a subset of the groups.

What if the variance is not homogeneous? It turns out that F tests of linear contrasts are *not* robust to violations of the homogeneity of variance assumptions. Moreover, it is not the case that violations of the assumption have the effect of simply lowering α : sometimes α will be raised and other times it will be reduced. When the groups have unequal variances, therefore, we use a different method for estimating σ_e^2

$$\hat{\sigma}_e^2 = \frac{\sum_{j=1}^a w_j s_j^2}{\sum_{j=1}^a w_j} \quad (10)$$

where

$$w_j = c_j^2/n_j \quad (11)$$

Using this new estimate of σ_e^2 , the formula for F becomes

$$F = \frac{(\Psi^2)/\sum_{j=1}^a (c_j/n_j)}{\sum_{j=1}^a [(c_j^2/n_j)s_j^2] / \sum_{j=1}^a (c_j^2/n_j)} \quad (12)$$

The numerator degrees of freedom remains 1, but the denominator degrees of freedom no longer is $N - a$. Instead, it is given by the formula

$$df = \frac{\left[\sum_{j=1}^a (c_j^2 s_j^2 / n_j) \right]^2}{\sum_{j=1}^a [(c_j^2 s_j^2 / n_j)^2 / (n_j - 1)]} \quad (13)$$

Fortunately, we rarely have to use Equations 12 and 13 to calculate F and df . Instead, we can use `linear.comparison()` to do the heavy lifting:

```

source(url("http://pnb.mcmaster.ca/bennett/psy710/Rscripts/linear_contrast_v2.R"))

## [1] "loading function linear.comparison"

contrast.unequal.var <- linear.comparison(y, g,
                                          c.weights = list(c(-1, -1, -1, -1, -1, -1,6)),
                                          var.equal = FALSE)

## [1] "computing linear comparisons assuming unequal variances among groups"
## [1] "C 1: F=3.772, t=1.942, p=0.080, psi=100.218, CI=(-14.451,214.886), adj.CI=
      (-14.451,214.886)"

contrast.unequal.var[[1]]$psi

## [1] 100.218

contrast.unequal.var[[1]]$F

## [1] 3.77214

contrast.unequal.var[[1]]$p.2tailed

## [1] 0.0802195

my.contrast[[1]]$psi

## [1] 100.218

my.contrast[[1]]$F

## [1] 7.21771

my.contrast[[1]]$p.2tailed

## [1] 0.00921941

```

Notice that the variable `var.equal` has been set to `FALSE`. Also notice that $\hat{\Psi} = 100.2$, which is the same value we obtained when we assumed equal variances. However, the estimate of σ_e^2 is different from the previous value. Consequently, F is reduced from 7.218 to 3.772, and the contrast is no longer significant ($p = 0.08$). Therefore, when assume unequal variances across groups, we do not reject the null hypothesis that $\mu_7 - \frac{1}{6}(\mu_1 + \mu_2 + \dots + \mu_6) = 0$.

4.4 Example #1

This example is question #3 in the Exercises for Chapter 4.

A psychologist collected data from three groups. The sample means are: $\bar{Y}_1 = 12$, $\bar{Y}_2 = 10$, $\bar{Y}_3 = 6$. $MS_W = 25$, and there are 10 subjects per group. The psychologist wants to compare the average of the means of Groups 1 and 2 to the mean of Group 3. We will use contrast coefficients $c=(1, 1, -2)$ to evaluate this comparison. The null and alternative hypotheses are

$$H_0 : (1)\mu_1 + (1)\mu_2 - (2)\mu_3 = 0 \quad (14)$$

$$H_1 : (1)\mu_1 + (1)\mu_2 - (2)\mu_3 \neq 0 \quad (15)$$

$$(16)$$

Because we only have the group means, and not the raw scores, we need to use Equation 4 to calculate Ψ :

$$\hat{\Psi} = \sum_{j=1}^a c_j \bar{Y}_j = (1)12 + (1)10 - (2)6 = 12 + 10 - 12 = 10$$

Next, we use Equation 5 to calculate F :

$$F = \frac{10^2 / (1/10 + 1/10 + 4/10)}{25} = \frac{100 / (6/10)}{25} = \frac{166.67}{25} = 6.67$$

with numerator and denominator degrees of freedom of 1 and $30 - 3 = 27$, respectively. The probability of obtaining this F , or one more extreme, if the null hypothesis is true, is

```
pf(6.67, 1, 27, lower.tail=FALSE)
```

```
## [1] 0.0155463
```

```
1 - pf(6.67, 1, 27)
```

```
## [1] 0.0155463
```

which is less than $\alpha = .05$, so we reject the null hypothesis in favor of the alternative. Note, by the way, that the two forms of the `pf` command give the same result.

4.5 Example #2

We will now compute contrasts on the set of (fictitious) blood pressure data listed in Table 4.1 in Maxwell and Delaney. The data, shown in Table 1, are from four groups of subjects corresponding to four treatments for hypertension: drug therapy (`aDrug`), biofeedback (`bFeedback`), dietary modification (`cDiet`), and a treatment that combines all aspects of the other treatments (`dCombo`). The dependent variable is blood pressure after treatment and is stored in `bp$blood`.

```
bp <- read.csv(url("http://pnb.mcmaster.ca/bennett/psy710/datasets/maxwell_tab41.csv"))
names(bp)
```

```
## [1] "blood" "group"
```

```
levels(bp$group)
```

```
## NULL
```

| | blood | group |
|----|--------|-----------|
| 1 | 84.00 | aDrug |
| 2 | 95.00 | aDrug |
| 3 | 93.00 | aDrug |
| 4 | 104.00 | aDrug |
| 5 | 81.00 | bFeedback |
| 6 | 84.00 | bFeedback |
| 7 | 92.00 | bFeedback |
| 8 | 101.00 | bFeedback |
| 9 | 80.00 | bFeedback |
| 10 | 108.00 | bFeedback |
| 11 | 98.00 | cDiet |
| 12 | 95.00 | cDiet |
| 13 | 86.00 | cDiet |
| 14 | 87.00 | cDiet |
| 15 | 94.00 | cDiet |
| 16 | 91.00 | dCombo |
| 17 | 78.00 | dCombo |
| 18 | 85.00 | dCombo |
| 19 | 80.00 | dCombo |
| 20 | 81.00 | dCombo |

Table 1: Blood Pressure Data (Table 4.1)

We are going to do three contrasts. First, we want to compare `dCombo` to the average of the other groups, so we will use a contrast `c=(1/3, 1/3, 1/3, -1)`. Next, we will compare `cDiet` to the average of `aDrug` and `bFeedback` with a contrast `c=(1/2, 1/2, -1, 0)`. Finally, we will compare `aDrug` to `bFeedback` with the contrast `c=(1, -1, 0, 0)`. (Note that we must set the contrast for *all* groups, even ones that are not included in the contrast.) We first construct a `list` that has all three contrasts.

```
blood.contrasts <- list(c(1/3, 1/3, 1/3, -1), c(1/2, 1/2, -1, 0), c(1, -1, 0, 0))
```

And then we pass the `bp$blood`, `blood$group`, and `blood.contrasts` to the function `linear.comparison`:

```
bp.results <- linear.comparison(bp$blood,
                               bp$group, blood.contrasts,
                               var.equal = TRUE)

## [1] "computing linear comparisons assuming equal variances among groups"
## [1] "C 1: F=4.815, t=2.194, p=0.043, psi=9.333, CI=(2.554,16.112), adj.CI=
##      (-2.036,20.703)"
## [1] "C 2: F=0.012, t=0.110, p=0.913, psi=0.500, CI=(-7.767,8.767), adj.CI=
##      (-11.601,12.601)"
## [1] "C 3: F=0.321, t=0.566, p=0.579, psi=3.000, CI=(-10.210,16.210), adj.CI=
##      (-11.163,17.163)"

bp.results.unequal <- linear.comparison(bp$blood, bp$group,
                                       blood.contrasts,
                                       var.equal = FALSE)
```

```
## [1] "computing linear comparisons assuming unequal variances among groups"
## [1] "C 1: F=8.519, t=2.919, p=0.014, psi=9.333, CI=(2.298,16.369), adj.CI=
(0.320,18.346)"
## [1] "C 2: F=0.016, t=0.128, p=0.900, psi=0.500, CI=(-8.009,9.009), adj.CI=
(-10.361,11.361)"
## [1] "C 3: F=0.232, t=0.481, p=0.643, psi=3.000, CI=(-11.407,17.407), adj.CI=
(-15.862,21.862)"
```

We can list the results for comparison n using the syntax `bp.results[[n]]` (note the double brackets!). The results for each comparison are quite long, so I'll show only one complete record:

```
bp.results[[1]]

## $contrast
## [1] 0.333333 0.333333 0.333333 -1.000000
##
## $F
## [1] 4.81505
##
## $t
## [1] 2.19432
##
## $df1
## [1] 1
##
## $df2
## [1] 16
##
## $p.2tailed
## [1] 0.0433206
##
## $psi
## [1] 9.33333
##
## $confinterval
## [1] 2.5543 16.1124
##
## $adj.confint
## [1] -2.03615 20.70282
##
## $alpha
## [1] 0.05
##
## $SS.contrast
## [1] 324.414
##
## $d.effect.size
## [1] 1.13707
##
## $R2.alerting
## [1] 0.969702
##
## $R2.effect.size
## [1] 0.229665
##
```

```
## $R2.contrast
## [1] 0.231325
```

The contrast coefficients are listed, as are the values of F , $t = \sqrt{F}$, p and $SS_{contrast}$. Also listed are the value of $\hat{\Psi}$ and the $100(1 - \alpha)\%$ confidence interval for Ψ . The last four values are measures of effect size and association strength, which we'll discuss later.

The F and p values for all three contrasts are

```
for (kk in 1:3) {
  print(sprintf("Contrast %2i, F = %4.3f, p = %4.3f",
               kk,
               bp.results[[kk]]$F,
               bp.results[[kk]]$p.2tailed))
}

## [1] "Contrast  1, F = 4.815, p = 0.043"
## [1] "Contrast  2, F = 0.012, p = 0.913"
## [1] "Contrast  3, F = 0.321, p = 0.579"
```

The results from the contrasts assuming unequal group variances are

```
for (kk in 1:3) {
  print(sprintf("Contrast %2i, F = %4.3f, p = %4.3f",
               kk,
               bp.results.unequal[[kk]]$F,
               bp.results[[kk]]$p.2tailed))
}

## [1] "Contrast  1, F = 8.519, p = 0.043"
## [1] "Contrast  2, F = 0.016, p = 0.913"
## [1] "Contrast  3, F = 0.232, p = 0.579"
```

The contrast between dCombo and the other groups is significant, but the other contrasts are not. The value of the contrast is

```
bp.results[[1]]$psi
```

```
## [1] 9.33333
```

```
bp.results.unequal[[1]]$psi
```

```
## [1] 9.33333
```

In other words, using the contrast that was calculated assuming equal group variances,

$$\hat{\Psi} = \frac{1}{3}(\mu_1 + \mu_2 + \mu_3) - \mu_4 = 9.333$$

The confidence interval for the comparison is

```
bp.results[[1]]$confinterval
## [1] 2.5543 16.1124

bp.results.unequal[[1]]$confinterval
## [1] 2.29767 16.36900
```

4.5.1 further calculations

You should repeat the analyses after multiplying the contrast weights by a scalar. For example, try these coefficients:

```
blood.contrasts <- list(c(1/3, 1/3, 1/3, -1)* 3, c(1/2, 1/2, -1, 0) * 2, c(1, -1, 0, 0))
```

How do the results change? How do they stay the same?

4.6 Measures of Effect Size & Association Strength

A common measure of the standardized difference between two means is Cohen's d

$$d = (\mu_1 - \mu_2) / \sigma_e$$

which can be estimated from the data by

$$\hat{d} = (\bar{Y}_1 - \bar{Y}_2) / \sqrt{MS_W} \quad (17)$$

In the case of two or more groups, we can define a standardized difference *for a contrast* among population means as

$$d = 2\Psi / \left(\sigma_e \left[\sum_{j=1}^a |c_j| \right] \right)$$

We can estimate d from data by

$$d = 2\hat{\Psi} / \left(\sqrt{MS_W} \left[\sum_{j=1}^a |c_j| \right] \right) \quad (18)$$

When the comparison is between two group means (e.g., $c=(-1,1,0,0,\dots)$), Equations 17 and 18 are the same.

Your textbook describes several measures of association strength that are based on $SS_{contrast}$. The first is $R_{alerting}^2$ which is defined as

$$R_{alerting}^2 = SS_{contrast} / SS_B \quad (19)$$

Recall that SS_B is a measure of the variation among group means:

$$SS_B = \sum_{j=1}^a [n_j (\bar{Y}_j - \bar{Y}_u)^2]$$

So, Equation 19 expresses $SS_{contrast}$ as a proportion of the “total variation” among groups. $R_{alerting}^2$ can vary between 0 and 1. As your book notes, another interpretation of $R_{alerting}^2$ is that it is the *squared* correlation between the comparison coefficients and the group means when the group n 's are equal.

Another measure of association strength is $R_{effectsize}^2$:

$$R_{effectsize}^2 = SS_{contrast}/SS_{Total} \quad (20)$$

Comparing Equations 19 and 20 shows that they have the same numerators but different denominators. $R_{effectsize}^2$ describes the between-group variability associated with the contrast relative to the total variability among the dependent measures.

The third and final measure of association strength does not depend on SS_{Total} or SS_B :

$$R_{contrast}^2 = SS_{contrast}/(SS_{contrast} + SS_W) \quad (21)$$

Your textbook describes one advantage that $R_{contrast}^2$ has over the other two measures of effect size. Suppose you are conducting a linear contrast that compares groups B and C to each other, and ignores group A . It turns out that the values of $R_{alerting}^2$ and $R_{effectsize}^2$ depend on the mean of group A even though that group is ignored in our contrast. The value of $R_{contrast}^2$ is less dependent on the value of the ignored group A .

None of these measures is necessarily better than the other two; they simply convey different information. You should note that it is possible for $R_{alerting}^2$ to be close to its maximum value (i.e., 1) but $R_{effectsize}^2$ to be very small. (How could this happen?)

4.7 Orthogonal Contrasts

In this section we introduce the notion of *orthogonal* contrasts. When sample sizes are equal, two contrasts are said to be orthogonal if and only if

$$\sum_{j=1}^a (c_{1j}c_{2j}) = 0 \quad (22)$$

where c_{1j} and c_{2j} are the coefficients, or weights, of the two contrasts. When sample sizes are unequal, contrasts are orthogonal if and only if

$$\sum_{j=1}^a (c_{1j}c_{2j}/n_j) = 0 \quad (23)$$

So, when sample sizes are equal, the pair of contrasts $c_1 = (1, 1, 1, -3)$ and $c_2 = (1, 1, -2, 0)$ are orthogonal because

$$(1)(1) + (1)(1) + (1)(-2) + (-3)(0) = 0$$

However, $c_1 = (1, 1, 1, -3)$ and $c_3 = (1, 1, 0, -3)$ are not orthogonal because

$$(1)(1) + (1)(1) + (1)(0) + (-3)(-3) \neq 0$$

A *set* of contrasts is said to be mutually orthogonal if and only if every possible pair of contrasts is orthogonal. For instance the set of contrasts

$$\begin{aligned} \Psi_1 &= (1)\mu_1 + (1)\mu_2 + (-1)\mu_3 + (-1)\mu_4 \\ \Psi_2 &= (1)\mu_1 + (-1)\mu_2 + (0)\mu_3 + (0)\mu_4 \\ \Psi_3 &= (0)\mu_1 + (0)\mu_2 + (1)\mu_3 + (-1)\mu_4 \end{aligned}$$

is (mutually) orthogonal because each pair of contrasts is orthogonal.

The concept of orthogonality is important for the following reason: multiple orthogonal contrasts of a set of group means provide independent pieces of information about the way the means differ. In other words, orthogonal contrasts provide separate and unique information about group differences. Multiple contrasts that are *not* orthogonal, on the other hand, provide overlapping, correlated, and partially-redundant information about group differences. This special characteristic of orthogonal contrasts is represented in the Equation 24, which is true *only* for orthogonal sets of contrasts:

$$\sum_{j=1}^{a-1} SS_{contrast,j} = SS_B \quad (24)$$

Notice that the summation in Equation 24 is over $a - 1$ contrasts. This leads to the second important property of orthogonal contrasts: If there are a groups, then the largest possible set of orthogonal contrast will have $a - 1$ elements. I will refer to a set of $a - 1$ orthogonal contrast as constituting a *complete* orthogonal set. Note that I am *not* suggesting that there are only $a - 1$ orthogonal contrasts. In fact, there are an infinite number of orthogonal contrasts, and there are an infinite number of orthogonal *sets* of contrasts. However, each complete orthogonal set will contain $a - 1$ elements.

These ideas about orthogonality, and the decomposition of SS_B into independent pieces, will be important when we discuss multiple comparisons.